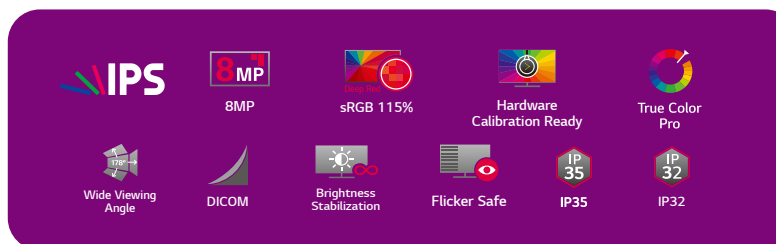
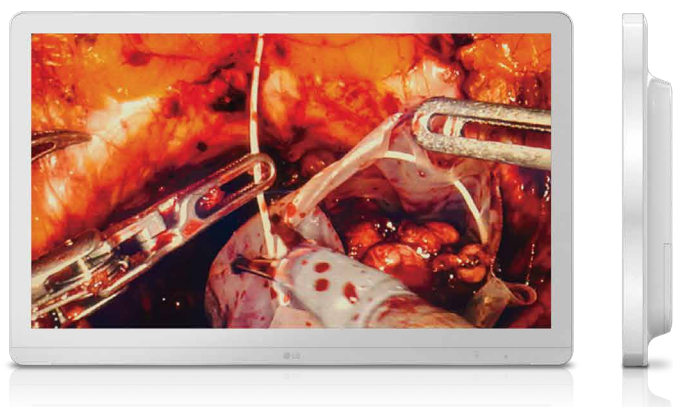


# LG 4K Surgical Monitor

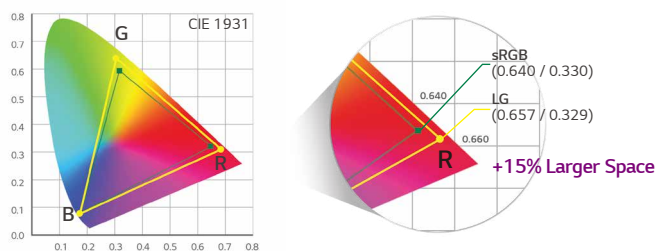


27HJ710S

## Superior Image Quality for Delicate Surgery

### 4K\* IPS Display with sRGB 115%(Deep Red)

The 8MP IPS display offers detailed images of previously hard-to-see regions and displays multiple imaging applications. It provides more accurate color reproduction with sRGB 115%(Deep Red), especially in the deep red color spectrum for color expression.



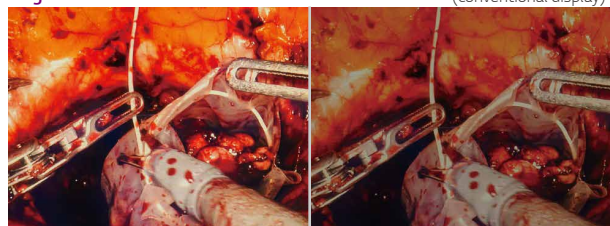
\*4K: 3840x2160

### DICOM\* Part 14 & Brightness Stabilization

The LG surgical monitor carefully measures and sets every grayscale tone as well to create a monitor compliant with DICOM Part 14 and ensure the most accurate outcome. And, its stabilized brightness settings quickly adapt to the surgical procedure and local lighting conditions.

#### Brightness Stabilization

Non Brightness Stabilization (conventional display)\*

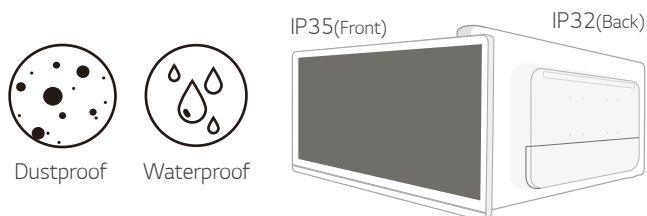


\*DICOM: Digital Imaging and Communications in Medicine.

## Essential Features for Safe Operation

### IP35 & IP32 : Dustproof & Water Resistance

To ensure protection against contact with substances such as blood or bodily fluids, LG surgical monitors are cleanable and durable, with ratings of IP35 on the front and IP32 on the back, securing them from any direction.



### Anti-Reflection & Optical Bonding Glass

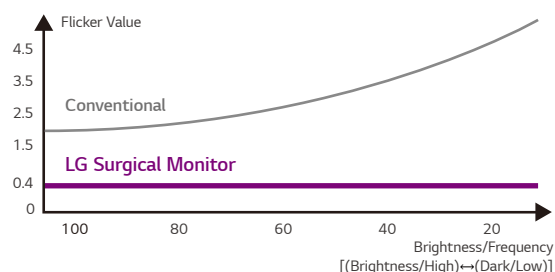
The LG surgical monitor with optical bonding glass significantly reduces internal reflection between the outer glass and the LCD to enhance accuracy. The improved anti-reflection ability enables a brighter and sharper display for the highest image quality.



## Long-lasting Eye Comfort

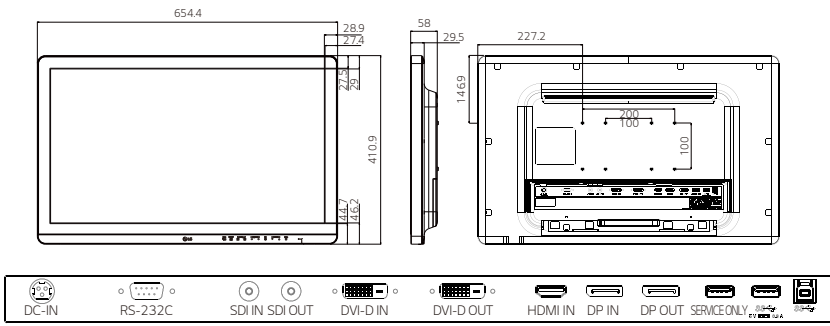
### Flicker Safe

Flicker Safe reduces the onscreen flicker level to almost zero, which helps minimize eye strain and eye fatigue. By combining Flicker Safe with the proven picture quality of IPS technology, users can comfortably work throughout the day.



\*This result based on internal LGE lab tests.

## Specification

Model Name		27HJ710S
External Dimension		
Panel	Type	IPS
	Size	27" (16:9)
	Native Resolution	3840 x 2160
	Pixel Pitch	0.1554 mm x 0.1554 mm
	Display Colors	10bit / sRGB 115% (Deep Red)
	Viewing Angles	178/178
	Brightness	800cd/m <sup>2</sup> (Typ.)
	Surface Treatment	Optical Bonding Glass
	Contrast Ratio	1000:1 (Typ.)
	Response Time	14ms (Typ.)
Video Signals	Input Terminals	HDMI (2.0) x 1, DP (1.2) x 1, DVI-D x 1, 3G-SDI x 1
	Output Terminals	DP (1.2) x 1, DVI-D x 1, 3G-SDI x 1
	Digital Scanning Frequency (H/V)	HDMI, DP: 30~135kHz / 56~61Hz, DVI-D: 30~83kHz / 56~61Hz
	Sync Formats	Dynamic Sync Mode (Thru Mode)
USB	Function	1 upstream, 1 downstream (For Calibration)
	Standard	USB 3.0
Power	Power Requirements	100-240Vac, 50/60Hz
	Maximum Power Consumption	120W
	Power Management	0.3W
Brightness Stabilization		Support
Resistance Rating		IP35 / IP32 (Front / Back), 8H Glass
Gamma		Gamma 1.8 / Gamma 2.0 / Gamma 2.2 Gamma 2.4 / Gamma 2.6 DICOM Gamma curve
Certifications & Standards		IEC (IEC60601-1 / IEC60601-1-2), FCC (FCC part 15 Class A), CB, UL (UL60601-1), C-UL-US, KC, RoHS, REACH, WEEE, CISPR, EN, ANSI, AAMI, CE MDD (Class 1)
Supplied Accessories		Power Cord, HDMI Cable, DP Cable, Adapter, CD/Book Manual
Physical Specifications	Weight(Without Stand)	7.7kg

\*The monitor stand is not included with the surgical monitor.