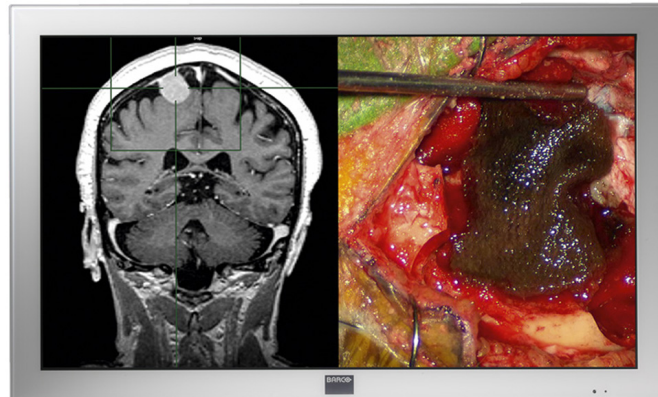


MDSC-2242

Full HD large-screen surgical display



- For the best hand-eye coordination
- Allows for easy cleaning and disinfection
- Works with Nexxis for video-over-IP integration

Barco's MDSC-2242 is a 42-inch large-screen surgical display with LED backlight, featuring full HD resolution.

Purpose-built for the operating room, the MDSC-2242 can visualize a wide range of analog and digital video sources, including HD endoscopic video, room and boom camera video, patient and surgery information, radiology and pathology images, with ultimate detail.

Color-calibrated, artifact-free images

Thanks to its high brightness, high contrast and high resolution, the MDSC-2242 presents surgeons with accurate, realistic images and excellent depth perception. It also offers the fastest, lag-free transmission of surgical images and the highest image quality available today.

Our next-generation motion adaptive de-interlacing and noise reduction algorithms, using full 10-bit image processing and a 12-bit look-up table, make the MDSC-2242 ideal for consulting PACS images in the OR.

Multi-source, multi-display imaging over IP

With its broad input connectivity, the MDSC-2242 offers the highest flexibility for multi-modality imaging (PiP & PaP), enabling reproduction of images from multiple sources and to multiple displays in the integrated operating room.

The 42-inch display is one of Barco's network-enabled surgical displays and offers integrated functionality (optional) for use with Nexxis digital OR, ensuring smooth distribution of uncompressed video and data over the IP network without delay.

Designed for use in the operating room

Barco's MDSC-2242 allows easy cleaning and disinfection thanks to its anti-reflective protective front glass.



The fan-less design avoids the spread of contaminants in the operating room.

Barco's MDSC-2242 features:

- 42" wide-screen LCD
- Full HD resolution
- Wide viewing angle
- High-bright LED backlight
- Advanced, full 10-bit, image processing algorithms for artifact-free video reproduction
- Widest range of SD and HD input signals, including 3G-SDI and DisplayPort
- Calibrated for perfect color and grayscale reproduction (ITU 709 and DICOM standards)
- Easy cleaning thanks to full size protection screen
- Remote control over RS232 and infrared RC handset

PRODUCT SPECIFICATIONS**MDSC-2242**

Screen technology	TFT AM LCD with LED backlight
Active screen size (diagonal)	1067 mm (42")
Active screen size (H x V)	930 x 523 mm (36.6" x 20.6")
Aspect ratio	16:9
Resolution	2MP (1920 x 1080)
Pixel pitch	0.4845 mm
Color imaging	Yes
Color support	1073 million (10-bit)
Color gamut	72% NTSC
Viewing angle	178° Hor / 178° Ver
Maximum luminance	500 cd/m ² (typical)
Contrast ratio	4000:1 (typical)
Response time	8 msec (GtG -typ)
Dot clock	(max) 165 Mhz
Gamma curve	Native, 1.8, 2.0, 2.2, 2.4, X-ray
Housing color	White RAL 9003
Video inputs	Video input signals: -DVI-I Single-Link (Digital & Analog – HDMI video support with HDCP) -Component Video RGBS / YPbPr (4xBNC) -S-video (4-pin Mini DIN) -Composite video (1xBNC) -3G-SDI (1xBNC) -DisplayPort (VESA std 1.1a) -Optional: integrated Nexxis network adapter Video input formats: -VGA & DVI: Up to 1920x1200 at 60Hz (reduced blanking) Maximum pixel clock: 165MHz Maximum Hor freq: 90kHz Maximum Ver freq: 75Hz -Standard PAL and NTSC for S-Video, Composite and Component -Component YPbPr/ RGBS: HDTV -up to 1080i & 1080p -SDI Format Supported: 625/25 PAL, 525/29.97 NTSC, 1080i50, 1080i59.94, 1080i60, 720p50, 720p59.94, 720p60, 1080p50, 1080p59.94, 1080p60 -SDI Compliance: SMPTE 425M (Level A), SMPTE 424M, SMPTE 292M, SMPTE 259M-C, SMPTE 296M, ITU-R BT.656, ITU-R BT.601 -Displayport 1.1a: up to 1920 x 1200 60Hz
Video outputs	DVI-D S-video (4-pin Mini DIN) Composite video (1xBNC) 3G-SDI (1xBNC)
Visualization modes	Picture-in-Picture, Picture-by-Picture, Zoom
Display controls	OSD menu / Infrared remote control / serial RS-232 interface (D-sub 9-pin)
Power requirements (nominal)	Power source (integrated power supply): 100 – 250 VAC / 47-63 Hz auto-switch Power supply for external module: +5VDC ±10% @500mA (max) through the DVI connectors DVI-in & DVI-out
Power consumption (nominal)	less than 150 W
OSD languages	English, French, German, Spanish, Italian
Dimensions w/o stand (W x H x D)	1021 x 615 x 90 mm (40.2" x 24.2" x 3.5")
Net weight w/o stand	24 kg (52.9 lbs)
Net weight packaged w/o stand	30 kg (66.1 lbs)

PRODUCT SPECIFICATIONS**MDSC-2242**

Mounting standard	VESA 600 and 200
Screen protection	IP21 / Front face: IPx5 Protective, non-reflective tempered glass
Recommended modalities	Endoscopy, Laparoscopy, X-ray, CT, MR, US
Regulation Compliance	IEC60601 3rd Edition Approvals/Marking: CE, C-UL-US, DEMKO Safety (Medical equipment): IEC60601-1, UL60601-1, CSA-C22.2 nr 601-1-M90 Electromagnetic Compatibility: EMC Medical EMC Standards: IEC60601-1-2, EN55011 /CISPR 11, FCC CFR47 part 15 & 18/Class A Environment: ROHS-2, REACH, WEEE compliant
Temperature	Operating: 0° -40° C / Storage: -20° -60° C
Humidity	Operating: 10% – 90% R.H. / Storage: 5% – 90% R.H.
Keyboard/mouse	7-key membrane, side-right
Supplied accessories	User Manual, Infrared Remote Control, DVI Dual-Link cable 3.0m, Mains cables (EU (CEBEC/KEMA) & US (Hospital grade UL))
Optional accessories	wall mount
Warranty	3 years

Last updated: 17 Sep 2019

Technical specifications are subject to change without prior notice. Please check www.barco.com for the latest information.